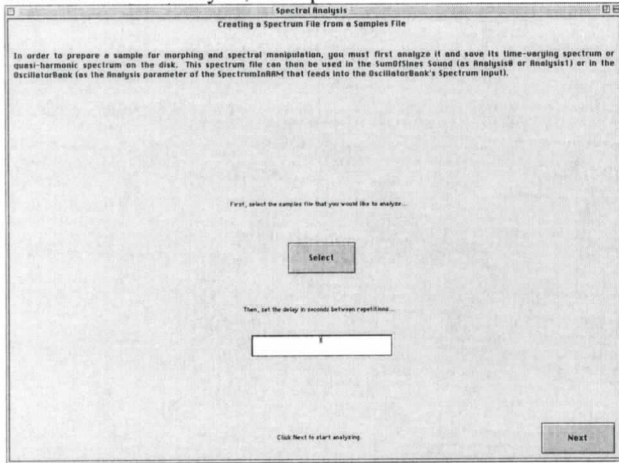
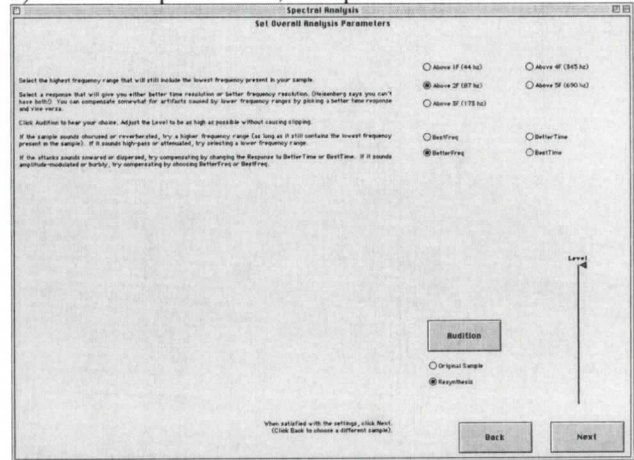


025:250 Composition: Electronic Media I
Kyma Spectral Analysis
Nov. 19, 2001

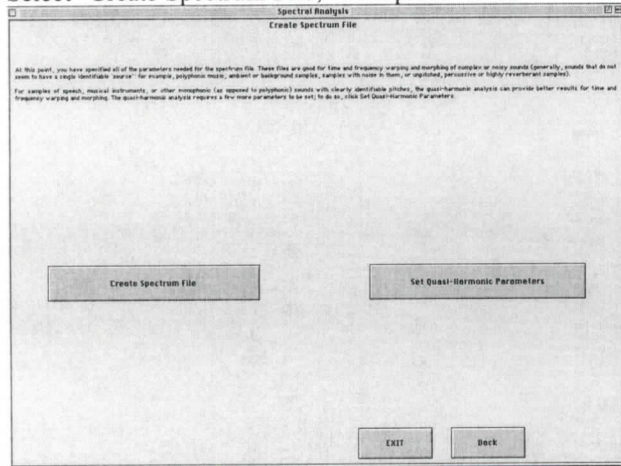
- 1) Launch the Spectral Analysis Tool from Tools>Spectral Analysis.
- 2) Select a file to analyze, then press "Next."



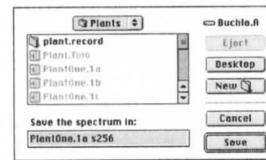
- 3) Select the parameters, then press "Next."



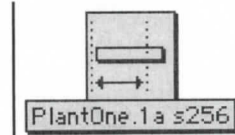
- 4) Select "Create Spectrum File," then press "Exit."



- 5) Save the file.



- 6) Resulting Sound File.



- 7) Flowchart and Parameter Field of Sound File:

