

025:250 COMPOSITION: ELECTRONIC MEDIA I

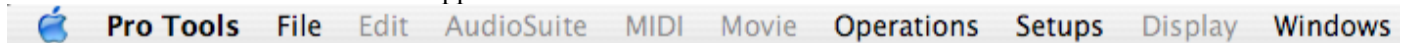
Aug. 29, 2007

Intro to Pro Tools

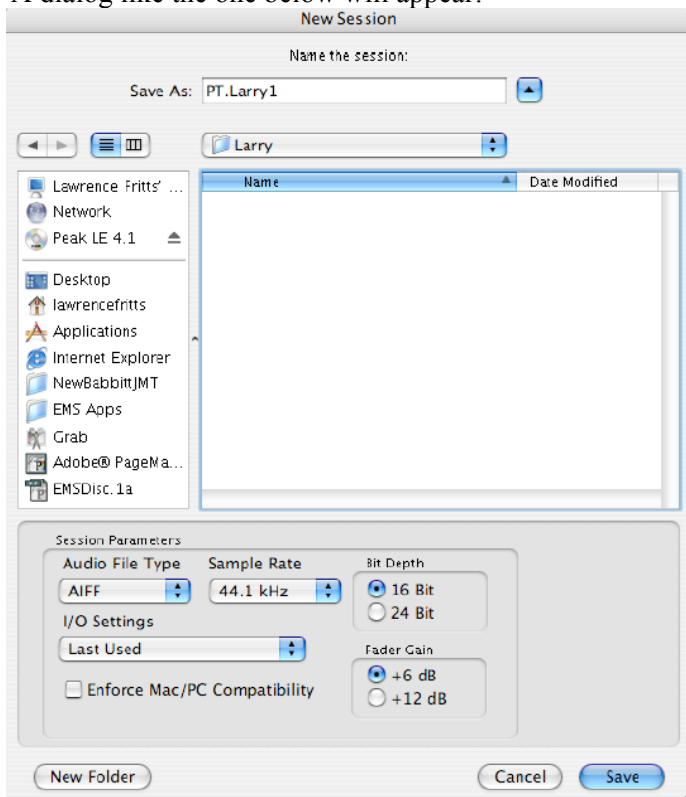
1. Prepare the audio system for **Pro Tools** as follows:
 - a) Power up the studio as discussed in class.
 - b) Bring up faders 1-2 and assign them to busses 1-2, 3-4, 5-6, 7-8.
 - c) Bring up the busses to unity gain.
 - d) Bring up faders 23-31 for desired diffusion.
2. Prepare a work folder for the **Pro Tools** session as follows:
 - a) On the EMS Users drive, create a folder and name it "Larry."
 - b) Open up the "Larry" folder and in it, create a folder named "Sounds."
 - c) Place the soundfiles that you wish to use in your session in "Sounds."
3. Launch **Pro Tools** by selecting its icon in the dock:



4. A menu bar like the one below will appear:

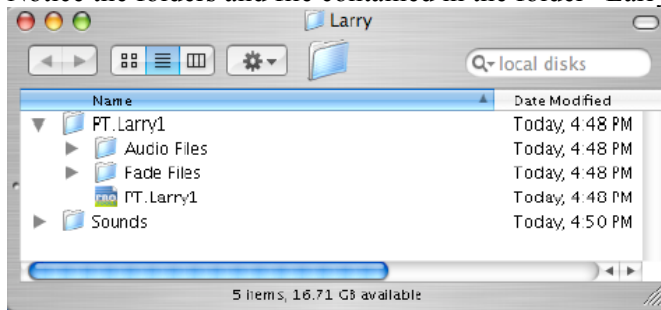


5. Create a new session as follows:
 - a) Select **File>New Session**
 - b) A dialog like the one below will appear:

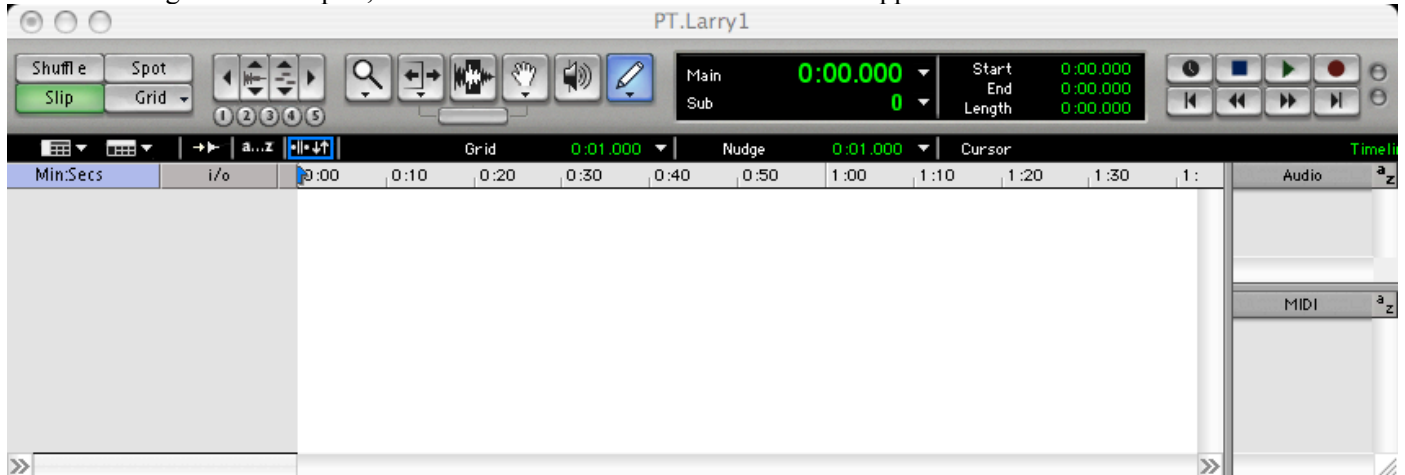


- c) **Save As:** "PT.Larry1"
- d) **Where:** "Larry."
- e) **Audio File Type:** AIFF
- f) **Sample Rate:** 44.1 kHz
- g) **Bit Depth:** 16 bit
- h) **I/O Settings, Fader Gain, Enforce Mac/PC Compatibility:** ignore for now.
- i) Select **Save**.

6. Notice the folders and file contained in the folder “Larry:”



7. After selecting **Save** in Step 5i, an **Edit Window** like the one below will appear:



8. Discussion of **Shuffle, Spot, Slip, Grid.**

9. Discussion of **Zoom** functions.

10. Discussion of tools: **Magnifying Glass, Trim, I-Beam Cursor, Grabber, Scrub, Pencil.**

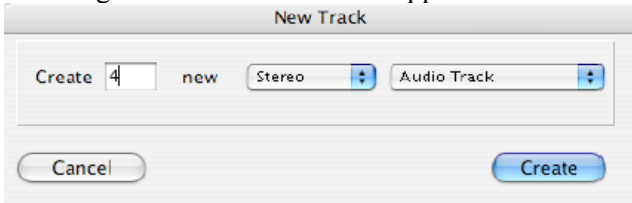
11. Discussion of **Time Display.**

12. Discussion of **Transport** functions.

13. Discussion of **Timeline.**

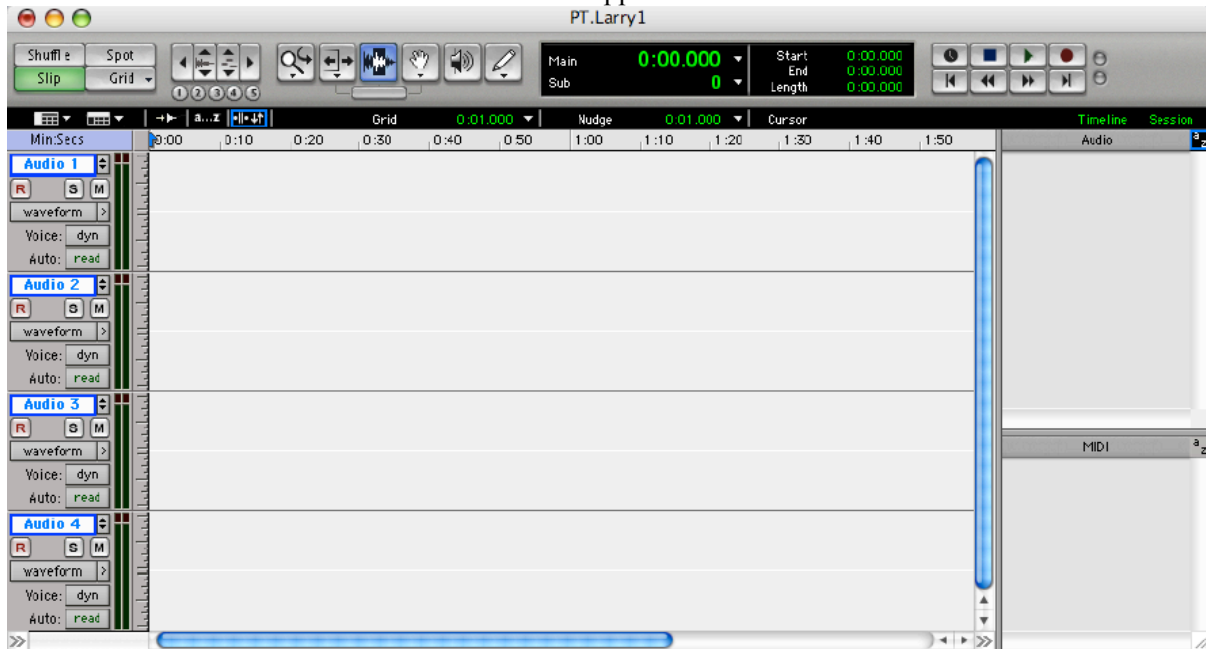
14. Discussion of **Audio Region List** and **MIDI Region List.**

15. To create audio tracks, do the following:
- Select **File>New Track**.
 - A dialog like the one below will appear:



- Create: 4**
- New: Stereo**
- Audio Track**

16. Click **Create**. A window like the one below will appear:



17. Discussion of window functions.

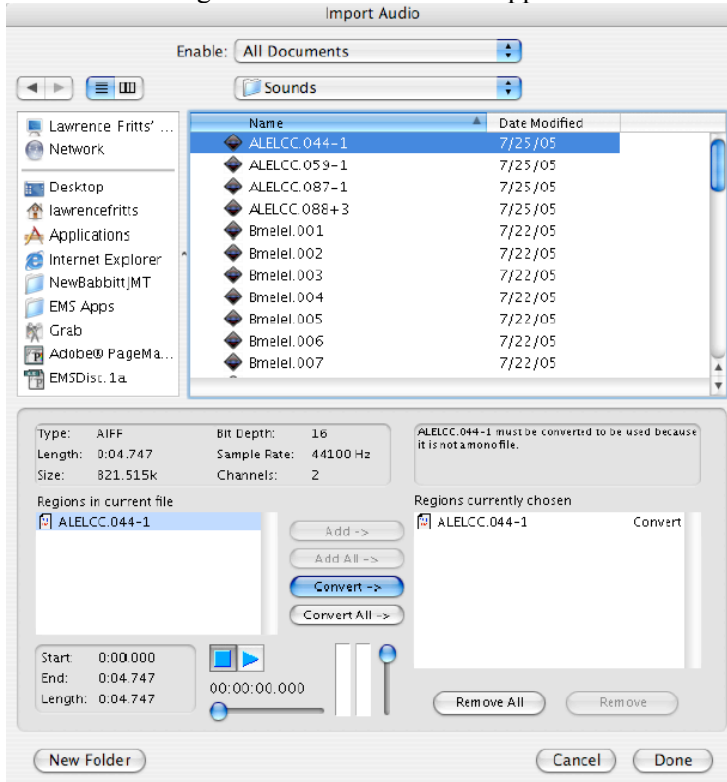
18. Note the following for each track:

- Track Name is Audio 1, 2,3, 4.
- R**: record
- S**: solo
- M**: mute
- Waveform, blocks, volume, mute, pan.**
- > selects: **mini, small, medium, large, jumbo, extreme** track heights.
- Voice**: dyn
- Auto**: read

19. Discussion of the i/o functions.

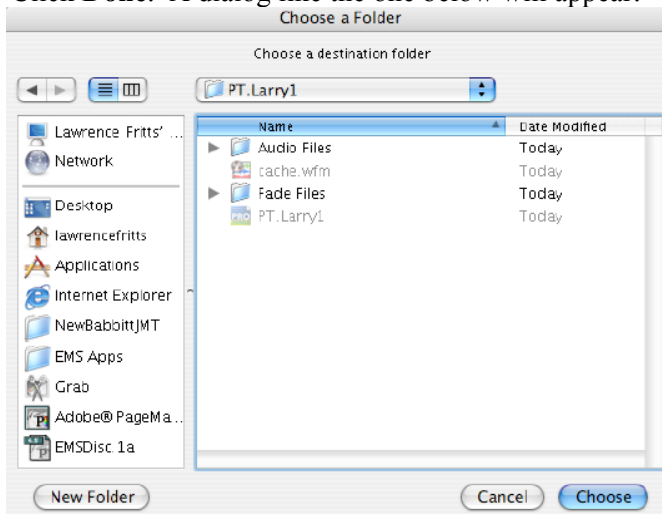
20. To import a soundfile into the **Audio Region List**, do the following:

- a) Using the **Audio Region List** submenu, select **Import Audio**. Note: beware of **File>Import Audio to Track**. A dialog like the one below will appear:

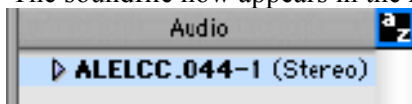


- b) Select the folder “PT.Larry1”>”Sounds”. The items shown in the list are the soundfiles you wish to import.
c) Double-click on a soundfile to add it to the **Region List**. Multiple soundfiles may be added, also.
d) Discussion of file info, auditioning, converting.

- e) Click **Done**. A dialog like the one below will appear:

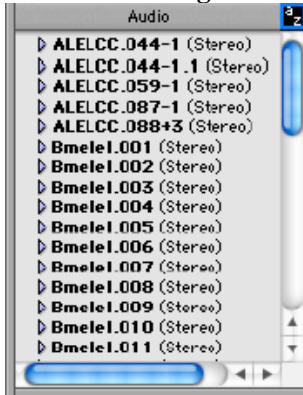


- f) Navigate to and select “PT.Larry1”>”Audio Files” and click **Choose**.
g) The soundfile now appears in the **Audio Region List**, as shown below:

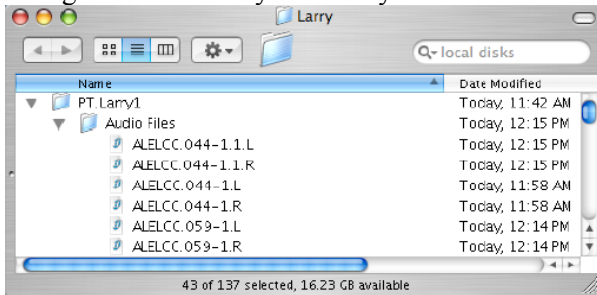


- h) Discussion of audio file name and stereo formats.

21. The easy way to import soundfiles is to drag and drop the files from “Larry>Sounds” onto the **Pro Tools** icon in the dock. This bypasses the import dialog, as shown in class. The imported soundfiles now appear in the **Audio Region List**, as shown below.

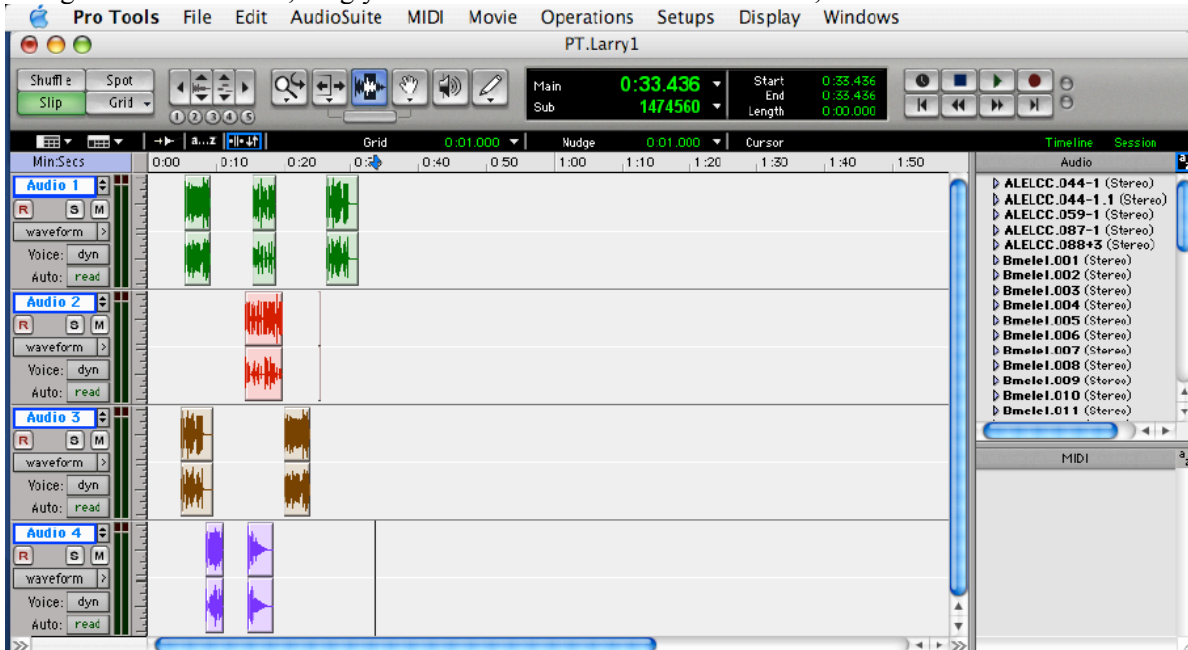


22. Navigate to the “Larry>PT.Larry1>Audio Files” folder and note the converted soundfiles, as shown below.



23. Discussion of importing mono files. Note: putting all mono soundfiles into the Audio Files folder is the least confusing method of importing.

24. Using the **Grabber** tool, drag your soundfiles into the **Edit Window**, as shown below:



25. Experiment with **Shuffle, Spot, Slip, Grid, Magnifying Glass, Trim, I-Beam Cursor, Grabber, Scrub, Pencil.**

26. Experiment with track functions, **name, solo, mute, waveform, volume, pan, track height.**

27. Quit **Pro Tools** when you are done and have a nice day.