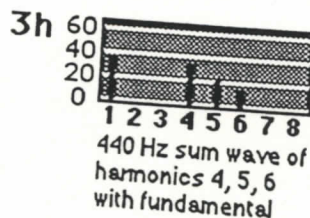
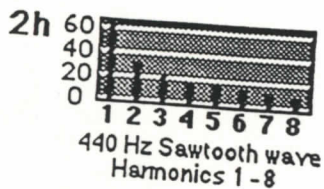
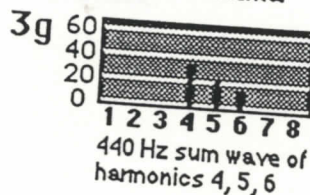
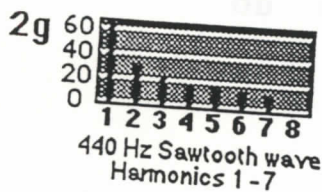
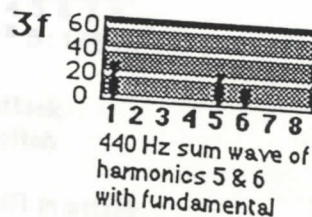
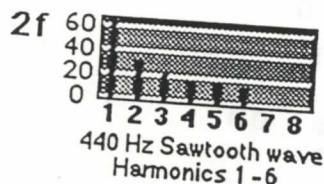
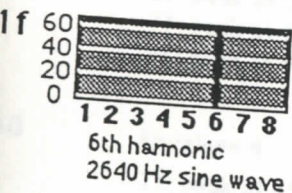
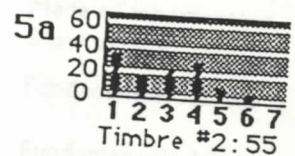
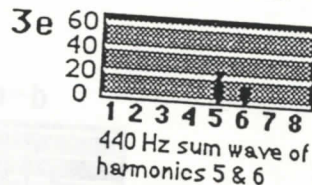
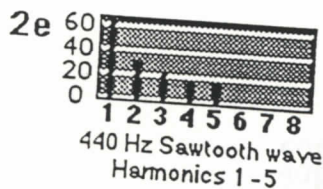
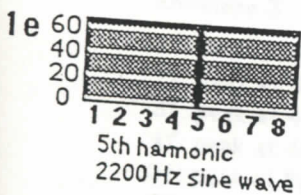
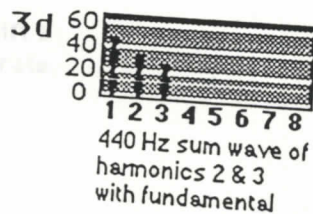
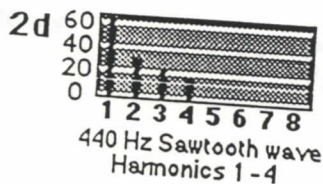
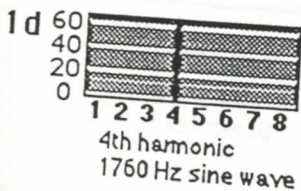
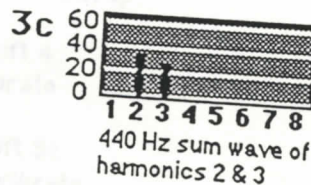
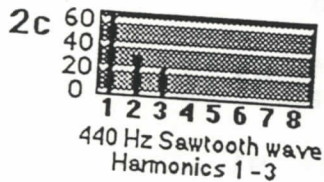
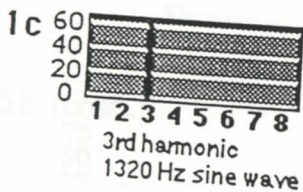
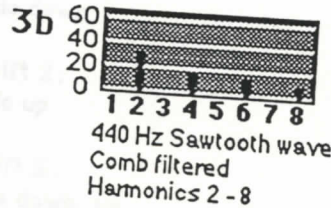
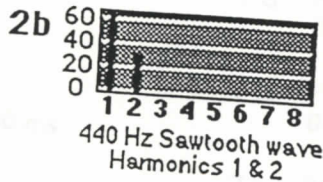
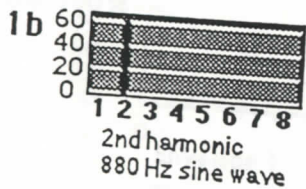
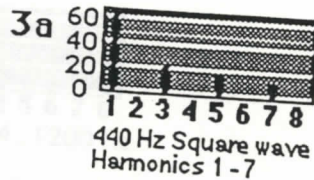
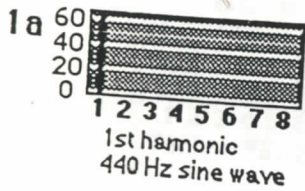
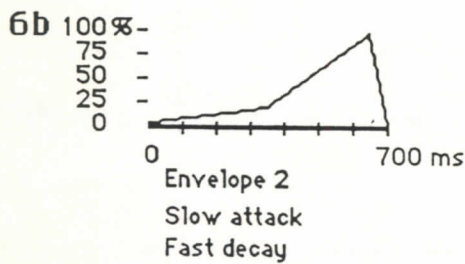
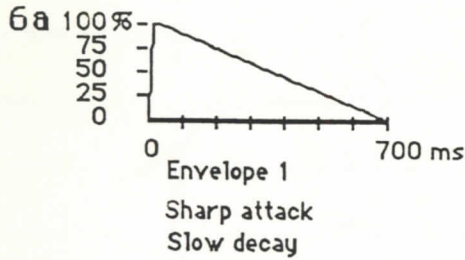
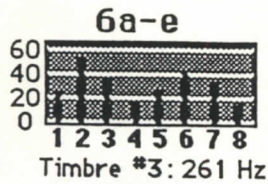


Spectrum Analysis Examples 1-5



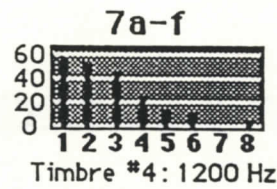
Spectrum Analysis Examples 6-11



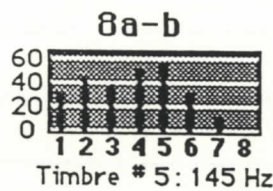
- 6c Envelope 3
- 1f: peak at 300 ms
 - 2f: peak at 350 ms
 - 3f: peak at 400 ms
 - 4f: peak at 450 ms
 - 5f: peak at 500 ms
 - 6f: peak at 550 ms
 - 7f: peak at 600 ms
 - 8f: peak at 650 ms

- 6d Envelope 4
- 1f: peak at 650 ms
 - 2f: peak at 600 ms
 - 3f: peak at 550 ms
 - 4f: peak at 500 ms
 - 5f: peak at 450 ms
 - 6f: peak at 400 ms
 - 7f: peak at 350 ms
 - 8f: peak at 300 ms

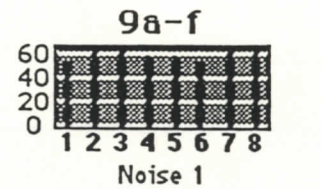
- 6e Envelope 5
- Sum of independent harmonic envelopes.



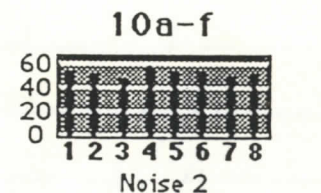
- 7a Pitch shift 1: Glissando down
- 7b Pitch shift 2: Glissando up
- 7c Pitch shift 3: Glissando down, up.
- 7d Pitch shift 4: Slow vibrato
- 7e Pitch shift 5: Medium vibrato
- 7f Pitch shift 6: Fast vibrato.



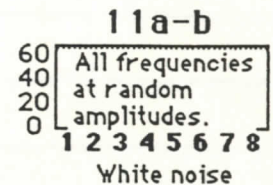
- 8a Sharp attack Steady pitch
- 8b Pitch shift in attack.



- 9a Fundamental: 20 Hz
- 9b Fundamental: 100 Hz
- 9c Fundamental: 500 Hz
- 9d Fundamental: 1,000 Hz
- 9e Fundamental: 5,000 Hz
- 9f Fundamental: 10,000 Hz



- 10a Fundamental: 20 Hz
- 10b Fundamental: 100 Hz
- 10c Fundamental: 500 Hz
- 10d Fundamental: 1,000 Hz
- 10e Fundamental: 5,000 Hz
- 10f Fundamental: 10,000 Hz



- 11a Slow attack.
- 11b Sharp attack.