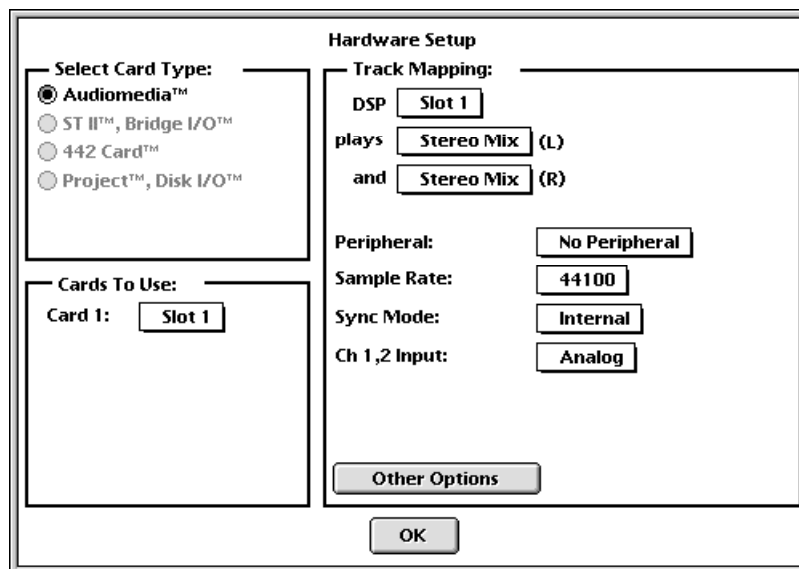


How to Reset the Audiomedia III DSP Card

- 1) Launch **Reverb**.
- 2) From the **Card** menu, select **Reset All Cards**.
- 3) Quite **Reverb**
- 4) Launch **Sound Designer**. You may get a message saying that the DSP card isn't selected.
- 5) From the **Setup** menu, select **Hardware Setup**. A window like the one below will appear:



- 6) From **Select Card Type**, choose Audiomedia III.
- 7) From **Cards to Use**, select whichever slot is available (other than none). The slot number depends on which computer we are using.
- 8) Click **OK**.