

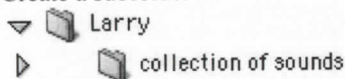
025:250 Composition: Electronic Media I
Basic Operations in ProTools
Sept. 5, 2001

1) Power up the studio and make the following patch connections:

- Digi Out 1 -> Mackie In 1
- Digi Out 2 -> Mackie In 2
- Mackie Main Out 1 -> Alesis In 1
- Mackie Main Out 2 -> Alesis In 2

Turn up the faders for Mackie mixer Input 1, Input 2, and Main.

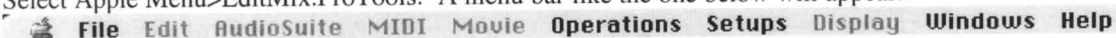
2) a) Create a new folder in the Moog.Users called "Your Name"
b) Create a subfolder in "Your Name" called "collection of sounds" as shown below



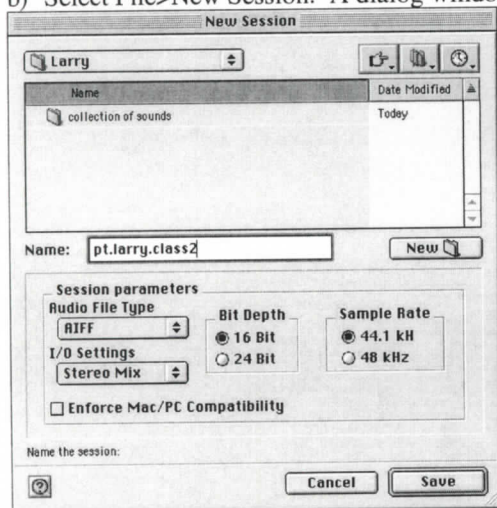
c) Insert your class CD of sounds into the computer and copy (by dragging) any sounds you like into "collection of sounds"

3) Launch ProTools as follows:

a) Select Apple Menu>EditMix.ProTools. A menu bar like the one below will appear.

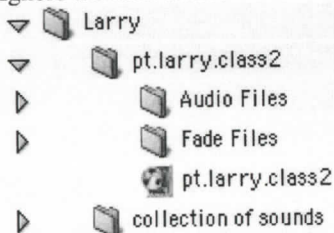


b) Select File>New Session. A dialog window like the one below will appear.



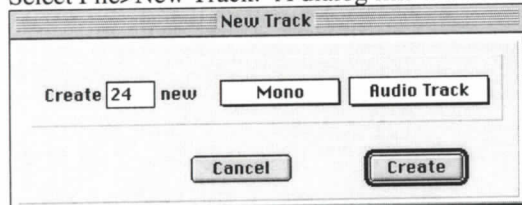
c) Set the window options to the ones shown above, provide a name for the session, and click **Save**.

d) Ignore the next window and instead go to the Finder and notice that the contents of "Your Name" are like the ones below:



4) Return to **ProTools** and create an edit window as follows:

a) Select File>New Track. A dialog like the one below will appear.



b) Set the window options to the ones shown above and click **Create**.

c) Track controls like the ones below will appear. The controls on the left are medium-sized; the controls on the right are small-sized.



d) Functions of these controls will be discussed in class (or see the manual)

Name

rec

read

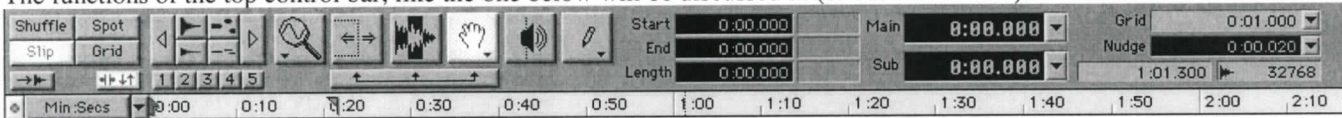
solo

mute

waveform, volume, etc

track height

5) The functions of the top control bar, like the one below will be discussed in (or see the manual).



Shuffle, spot

Slip

Grid

Zoom Views

Magnifying Glass

Trim

I-Beam Cursor

Grabber

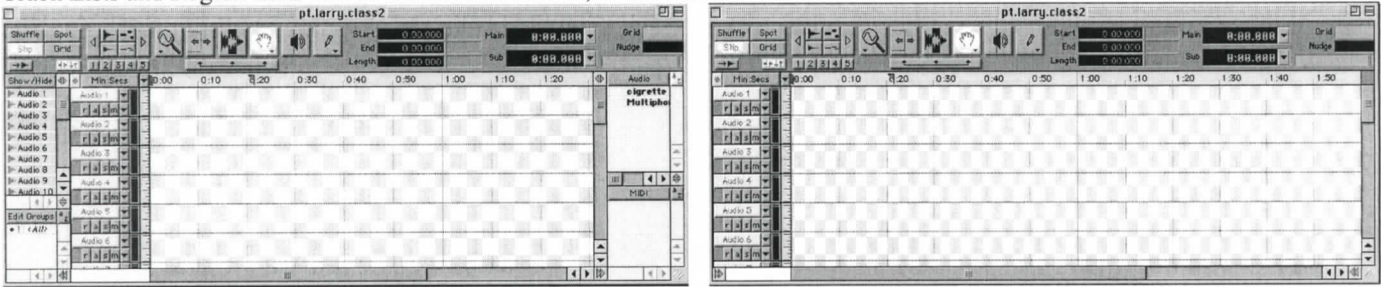
Scrubber

Pencil

Time Views

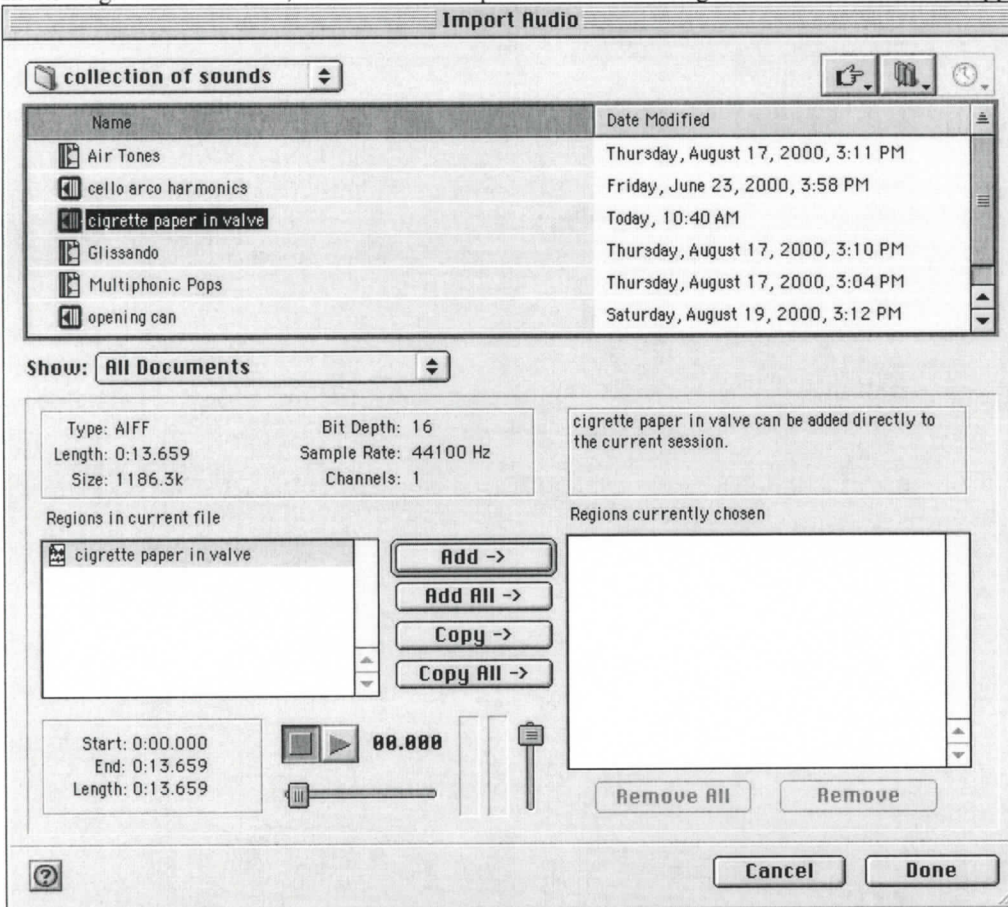
Meters

6) Track Lists and Region Lists can be resized and hidden, as shown below.



7) To import soundfiles into the session, do the following:

a) In the Region List window, select Audio>Import Audio. A dialog like the one below will appear.



b) File info will be discussed in class:

Type	Bit Depth
Length	Sample Rate
Size	Channels

c) Some file types can be added directly to the session (aiff, 44100 Hz, mono). The file will reside in "Collection of Sounds". Some file type need to be converted before being added to the session (SDII, .wav, 48000 Hz, stereo). This files will be converted and placed into the "Audio Files" Folder, shown below:

