


025:250 Composition: Electronic Media I

Intro to Kyma

Oct. 17, 2001

1) Basic Operation Overview:

- a) Power to the equipment racks must be on for **Kyma** to work.
- b) Patch **Kyma** into the audio systems as follows:
Kyma Out 1 -> Mackie In 1
Kyma Out 2 -> Mackie In 2
- c) Set the computer monitor color as follows:
Control Strip>Monitor Color Icon  > 256 Colors
- d) For MIDI control, the **MOTU** MIDI Interface must be set to "Live Keyboards."
- e) Launch **Kyma** by selecting Apple Menu>Process/Synthesize>Kyma.

2) Basic Terminology:

Sample File

Sound File

Flowchart

Prototype

Parameter Field (cyan box)

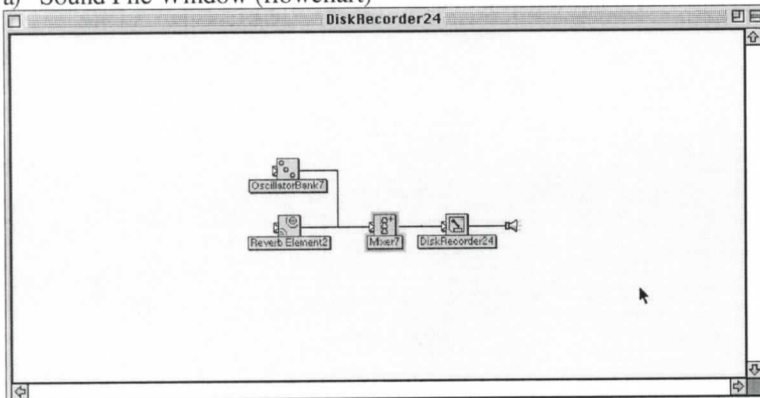
Hot Parameter (!red text)

Parameter Value (black text)

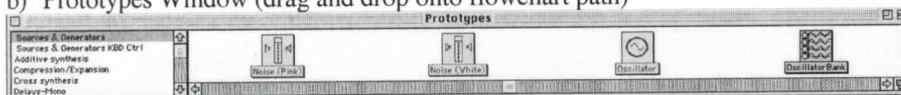
Cold Parameter (white box)

3) Basic Interface Structure:

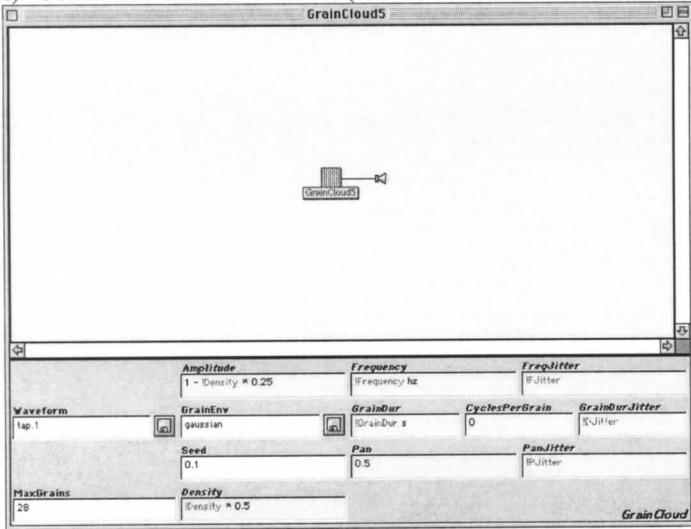
a) Sound File Window (flowchart)



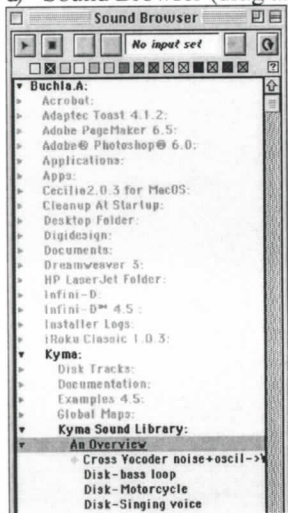
b) Prototypes Window (drag and drop onto flowchart path)



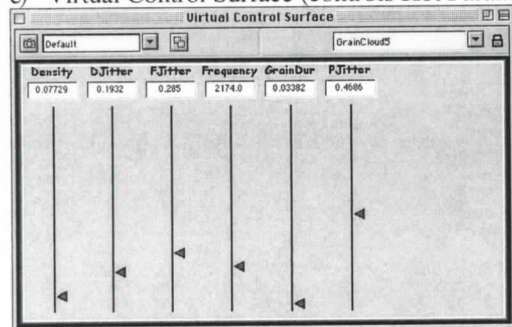
c) Sound File Parameter Fields (click on Sound in flowchart to open)



d) Sound Browser (drag and drop Samples File onto disk icon in parameter field)



e) Virtual Control Surface (controls Hot Parameters, in red, in parameter fields).



4) Other control options:

Sound File

MIDI Controllers

MIDI Software (Notation, Sequencer, Max)

Live Mic/Line

Script