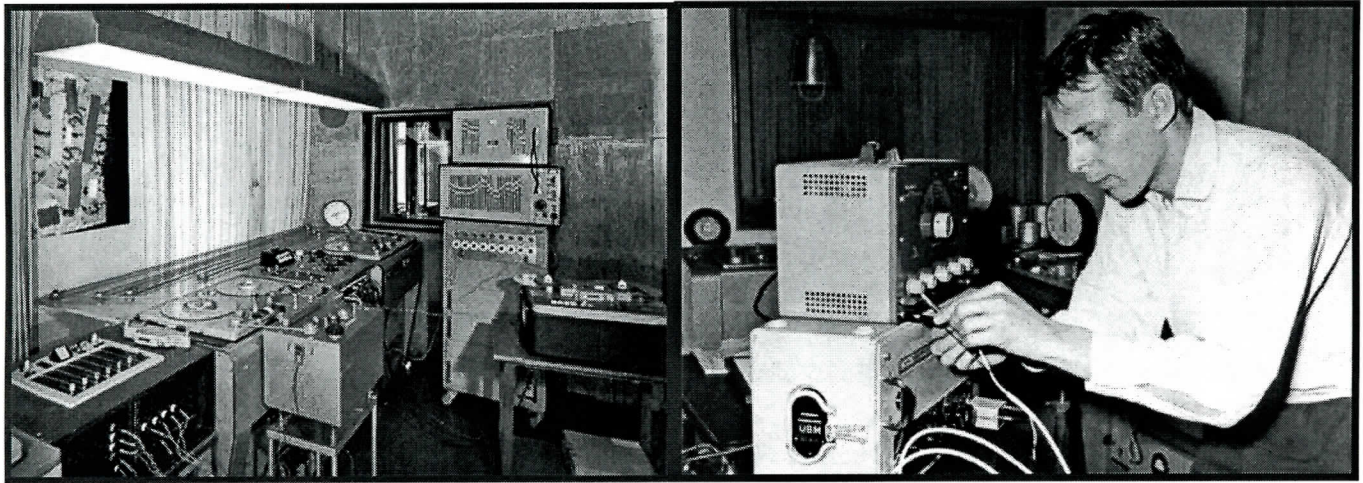


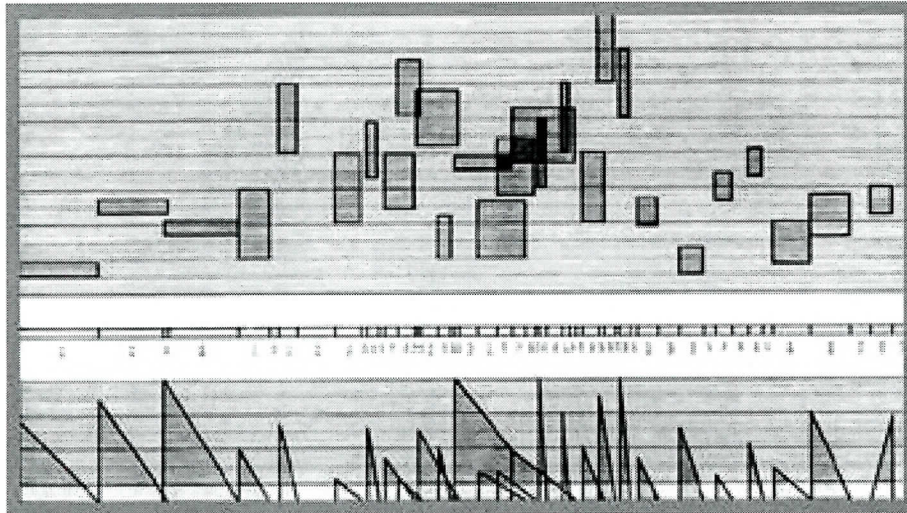
Composition: Electronic Media I
Fritts
Fall 2004
Studie II and Poeme Electronique

Studie II was composed by Karlheinz Stockhausen 1954 in the WDR Studios in Cologne, Germany. Its source material is sine tone superimposed in groups of 5, then sent into an echo-chamber.



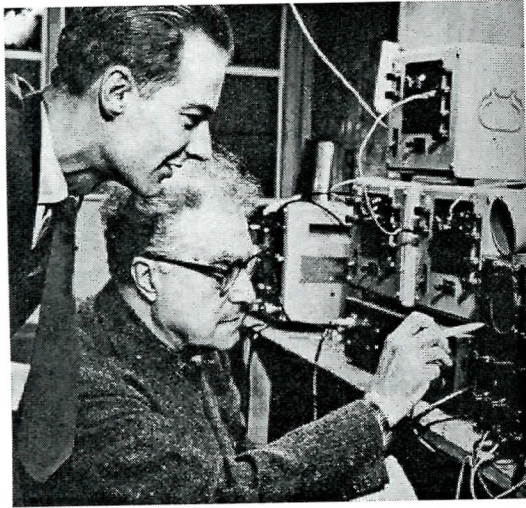
WDR Studio ca. 1967

Stockhausen ca. 1954

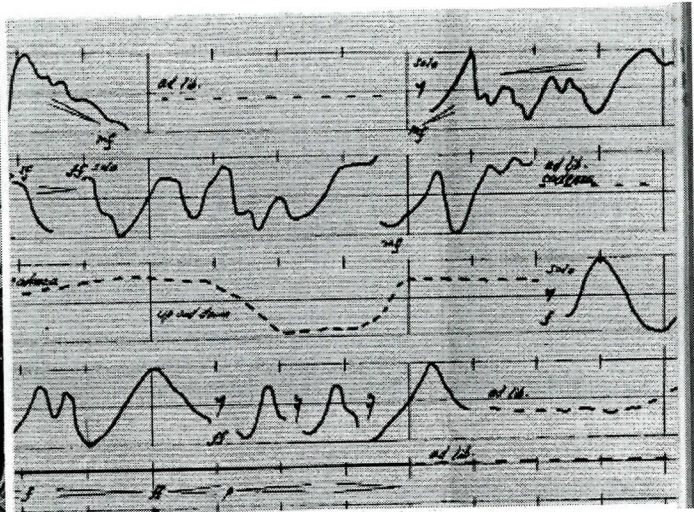


Score for Studie II

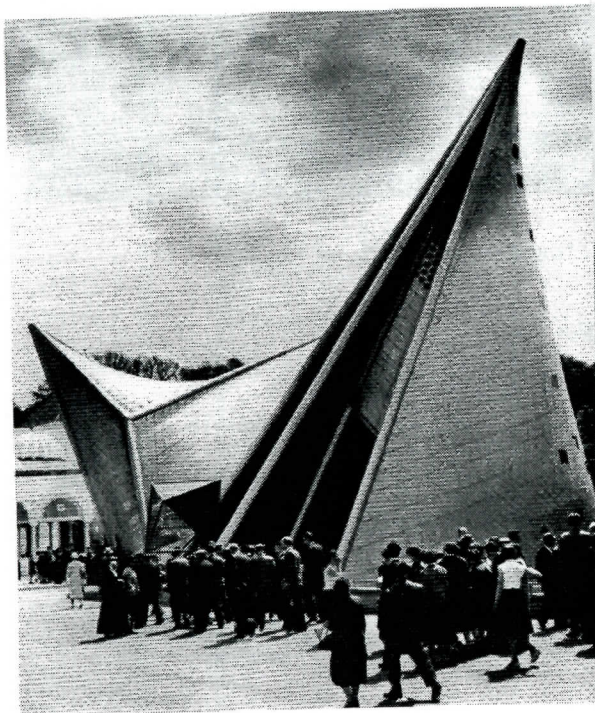
Poeme Electronique was composed by Edgard Varese for the 1958 Brussels World Fair. The piece was commissioned by Varese and the architect Le Corbusier by the electronics company, Philips. The work consisted of electronic sound, 400 loudspeakers, and film and still images projected inside the space. The design of the building was created by Iannis Xenakis, who later became well-known as a composer.



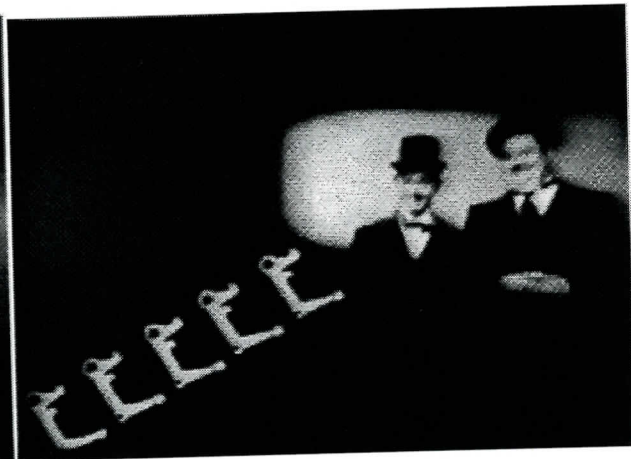
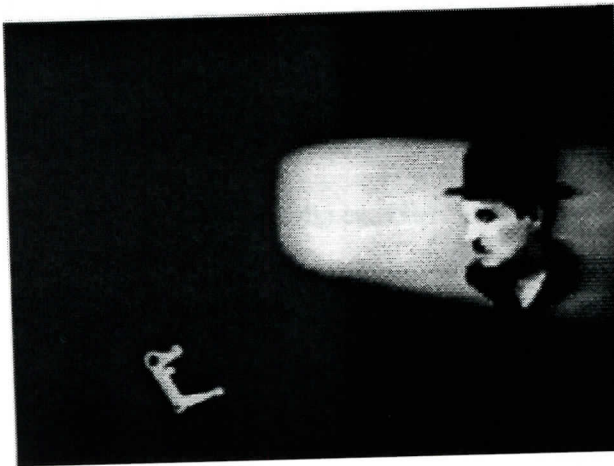
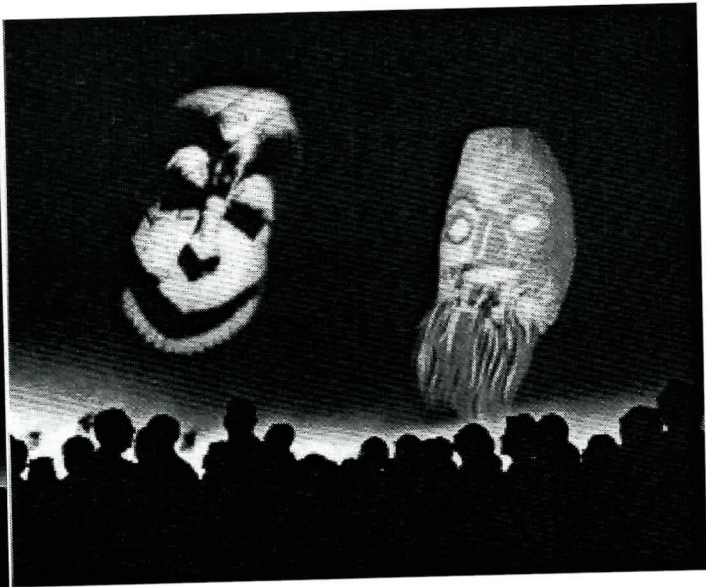
Varese and assistant composing *Poeme Electronique*.



Score for *Poeme Electronique*.



Two views of the pavillion.



Four views inside the pavillon during a performance.

PLAN OF THE INTERLUDE
120 sec. duration

End of the Poème électronique	5 to 10 sec.	10 to 15 sec.	90 to 100 sec.	5 sec.	Start of the Poème électronique
	of Absence-Silence + Reflections of still, diffused light which allows the audience to move in the darkness	A voice announces the presentation is over, <u>ordering</u> the audience to leave the hall, in a quite sharp, yet normal voice, in French or English	Clouds of intermittent sounds, varying in density and intensity, and moving within the space of the pavilion.	of a rhythmic signal understandable by an international audience, for example: the blows of a hammer which announce raising the curtain at the theater.	

Le Corbusier's plan for an interlude during the performance.