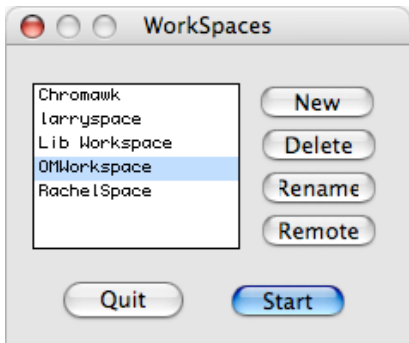
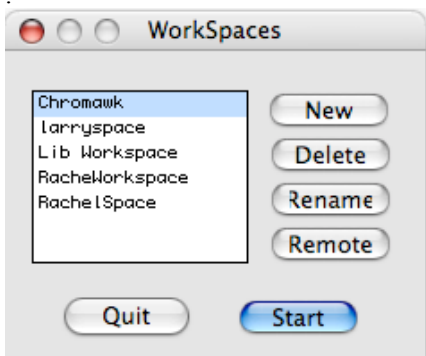


**Advanced Composition**  
**April 26, 2006**  
**Getting Started with Open Music**

1. Install Open Music.
2. Launch OM.Image. A window like the one below will appear:



3. Select OMWorkspace, as shown above, and rename as RachelWorkspace, as shown below:



Select RachelWorkSpace and Click “Start.”

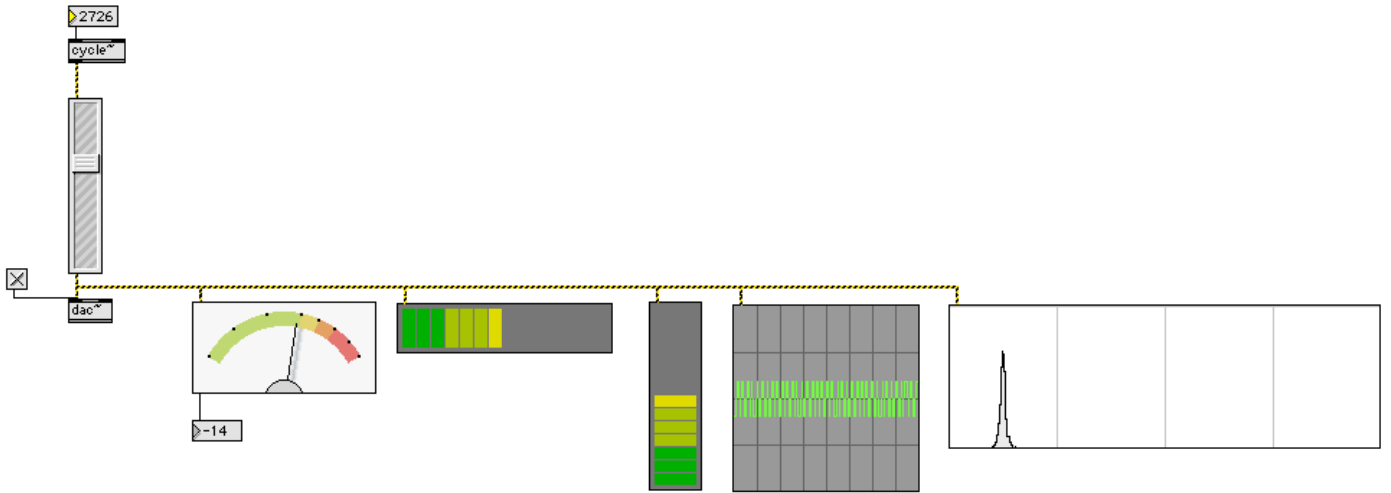


Discussion Object> Get Info.

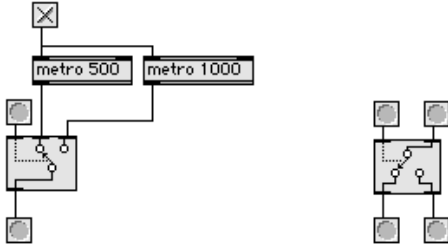
3. The dial below outputs integers.



4. The patch below routes a sine wave to a gain control, then to some meters, an oscilloscope, and a spectrograph.



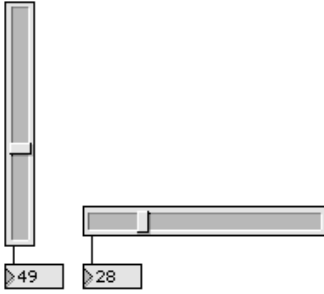
5. The graphic switch and graphic gates below route signals.



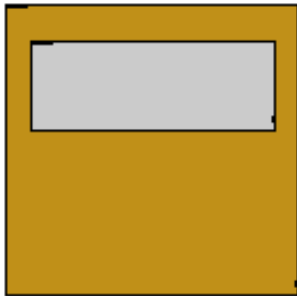
6. The note slider below responds to and creates MIDI note numbers.



7. More sliders.



8. Panels.



9. That's about it.