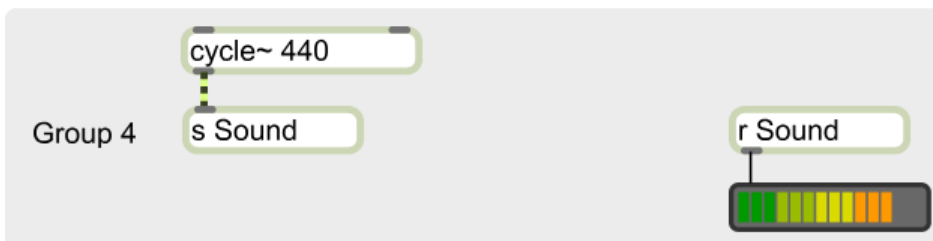
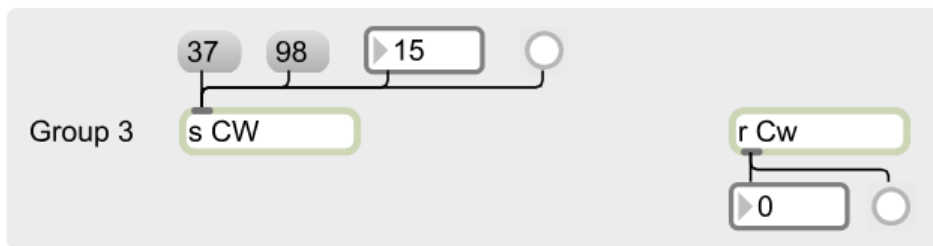
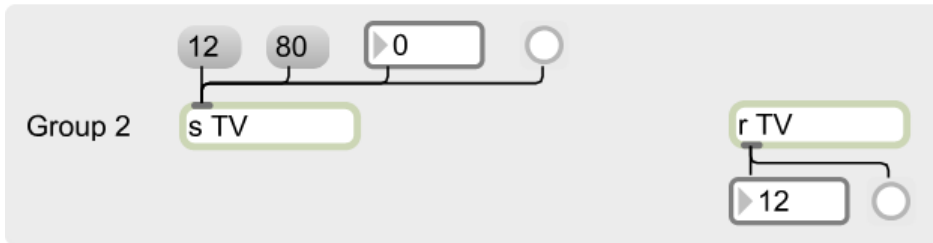
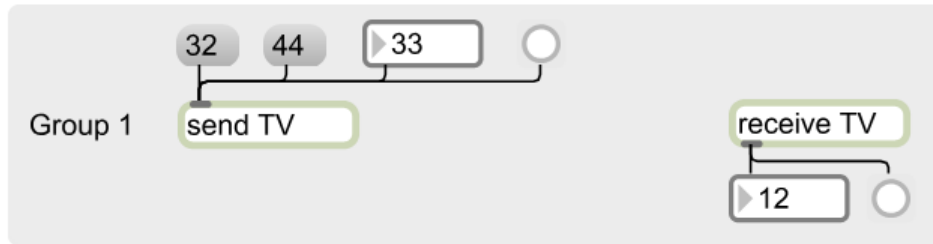


## 025:251 COMPOSITION: ELECTRONIC MEDIA II

Spring 2011

### Send, Receive, Panels, Arrange, and Color Palette in Max/MSP

1. The patch below is organized into groups. These show that the send object, also known as “s”, sends data to a receive or “r” object, as discussed in class.



2. Note the following.
- There can be more than 1 receive object, as shown in Groups 1 and 2.
  - The object names are case-sensitive, as shown in Group 3.
  - Audio can be sent, as shown in Group 4. (Note the gold and black braided audio cord between the “cycle~ 440” and the “s Sound” object; and the black single control cord between “r Sound” and the audio meter.
  - Sends and receives communicate not only within a single window, but between any patcher windows that are open, including sub-patches and their parents, as discussed later in class.
  - The send and receive object is extremely useful when one tries to avoid passing a cord through or around a group of objects.
  - It provides an alternative method of communicating between a parent window and its sub-patch, as discussed later in class.

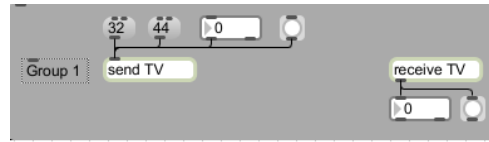
3. Discussion of the Panel object.
4. To add a panel to an area of a patch, do the following:
  - a. Create a complex of objects like the one shown below.



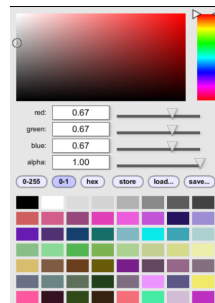
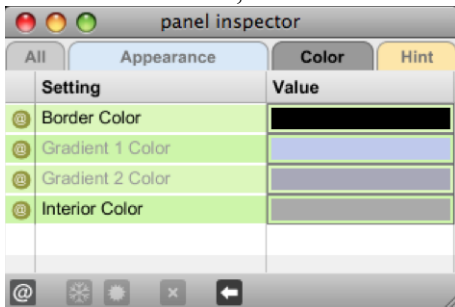
- b. Open the palette and click on the Panel object, like the one shown here:
- c. An empty panel will be shown, like the one below.



- d. Click on the lower right corner and resize to the desired shape.
- e. Drag and position it overlaid on top of the complex shown in Step 4a. This will result in an image like the one shown on the left, below.



- f. Go to the Arrange menu and experiment with Send Backward, Send to Back, Bring Forward, Bring to Front. The image on the right, above, is shown with the panel sent to back.
- g. To select a color, click once on the panel and open the Inspector by typing cmd + I. Select the Color tab, as shown on the left, below.



- h. Click in the area to the right of "Interior Color". A color palette will be shown, like the one on the right, above.
- i. The different methods of choosing a color will be discussed in class.