

025:250 COMPOSITION: ELECTRONIC MEDIA I

Fall 2012

Peak Key Commands

1. There are 4 types of files that can be panned.
 - a. Mono. This can be placed anywhere in the stereo field.
 - b. Stereo-ized centered mono. This file began as a mono file that was converted to stereo so that each side presented the exact same sound. This is indistinguishable from mono, to the ear.
 - c. Stereo-ized panned mono. The file began as a mono file that was converted to stereo and panned off-center in the process. This means that the left channel sound is identical to the right channel sound, except that one channel is louder than the other.
 - d. Discrete stereo. This is when the left channel sound is completely different than the right channel sound.
 - e. Mixed stereo. This is when the left channel contains some sounds that are louder and some that are softer than the sounds in the right channel

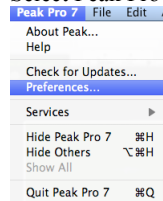
This is a mono file that has been converted to stereo.

2. Automation follows edit.

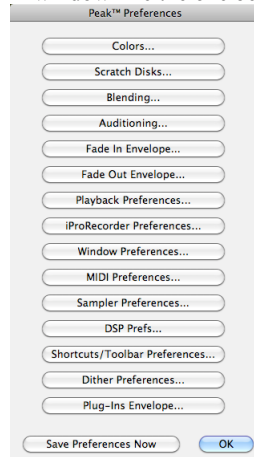
3. An automation value can sometimes be -2.0, -2.3, -2.4. To reset these to a uniform set of values, move the point up to the maximum of + 12.0. De-click or release the mouse. Then click, hold, and drag to the desired value.

24. Key commands in Peak.

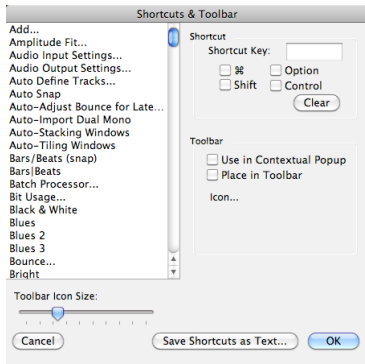
Select Peak Pro 7>Preferences, as shown below.



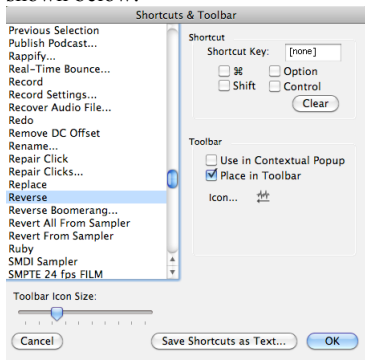
A window like the one below will appear:



Select "Shortcuts/Toolbar Preference..." A window like the one below will appear:

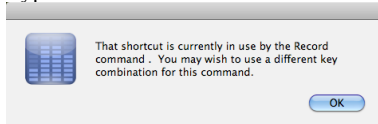


In the menu on the left, scroll down to “Reverse.” Notice that the Shortcut Key window says [none], and that none of the keys are checked, as shown below:

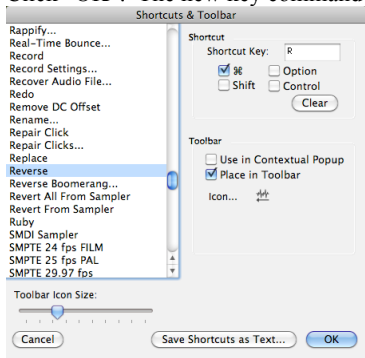


Note: We will not discuss the Toolbar options.

Type “cmd R”. A window like the one below will appear:



Click “OK”. The new key command is shown in the window below:



Click “OK”. The Peak Preferences window will appear. Click “OK” to save the key command.

To confirm the new key command, go to the DSP menu and notice that “Reverse” has “cmd R” written on the right.

DSP	Sampler	Plug-Ins	Options
Add...			
Amplitude Fit...			
Auto Define Tracks...			
Bit Usage...			
Change Duration...			
Change Duration (Variable)...			
Change Gain...			
Change Pitch...			⌘P
Change Pitch (Variable)...			
Convert Sample Rate...			
Convolve			
Crossfade Loop...			
Declicker...			
Envelope From Audio...			
Fade In			⌘/
Fade Out			⌘\
Find Peak			
Gain Envelope...			
Harmonic Rotate...			
ImpulseVerb...			
Invert			
Loop Tuner...			
Mono To Stereo...			
Stereo To Mono...			
Mix...			
Modify Sample Rate...			
Modulate...			
Normalize...			⌘M
Normalize (RMS)...			
Panner...			
Perpetual Looper...			
Phase Vocoder...			
Rapify...			
Remove DC Offset			
Repair Click			
Repair Clicks...			
Reverse Boomerang...			
Reverse			⌘R
Strip Silence...			
Swap Channels			
Threshold...			
Voiceover Ducking...			